



- Large scale crane lifting
- Reduces overall pressure
- Quick and easy to set up

## MULTI MAT SYSTEM 1800MM



RELIABLE. STRONG. SAFE.

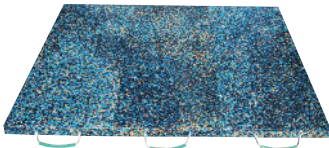
**OUTRIGGER PADS**

[outriggerpads.co.uk](http://outriggerpads.co.uk)

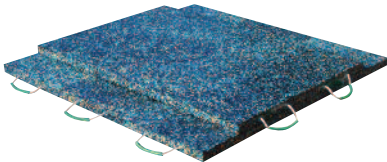


Manufactured to our premium pad specification our Multi Mat System offers the perfect solution for large scale crane lifting. Excellent durability and rigidity reduces the overall pressure directed at the ground effectively supporting the equipment.

## MULTI MAT SET-UP



**Stage 1** - Three mats are laid side by side



**Stage 2** - Two mats are placed on top at 90 degrees



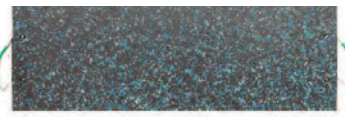
**Stage 3** - A single outrigger pad is placed centrally on the top, securing the multi mat system

**Please note:** Ensure there are no gaps or debris present in the set-up. If in doubt refer to your lift plan.

## MULTI MAT OPTIONS 1800MM

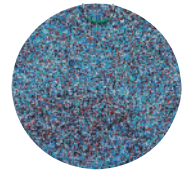
### IP-57710

1800x600x50mm



### IP-57685

1200x60mm

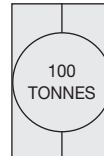


Our Multi Mat system recommends a round pad to secure, but a square pad is equally suitable.

Dimensions (mm)	Weight (kgs)	Product Code
1800x600x50	54.00	IP-57710
1200x60 (to secure)	66.40	IP-57685

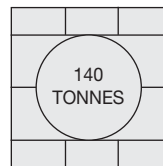
## CONFIGURATION OPTIONS 1800MM

1800x600x50mm



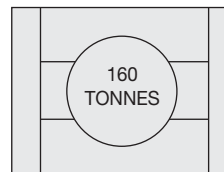
### 2.16m<sup>2</sup> Configuration

Requires:  
IP-57710 x 2  
IP-57685



### 3.24m<sup>2</sup> Configuration

Requires:  
IP-57710 x 5  
IP-57685



### 4.32m<sup>2</sup> Configuration

Requires:  
IP-57710 x 7  
IP-57685

**Please note:** Capacity based on complete Multi Mat system. These configurations are calculated for the max ground pressure of 5kgs/cm<sup>2</sup>, for normal operational conditions.

