

INTERLOCKING MULTI-MATS

Features include:

- 75-160 tonne load capacity
- Quick and easy to set up
- Lightweight and easy to handle and store
- Designed to support high capacity lifting with flexibility to use in various configurations
- Made from extremely high quality, heavy duty UHMW polyethylene

Compression Test

Test Objective

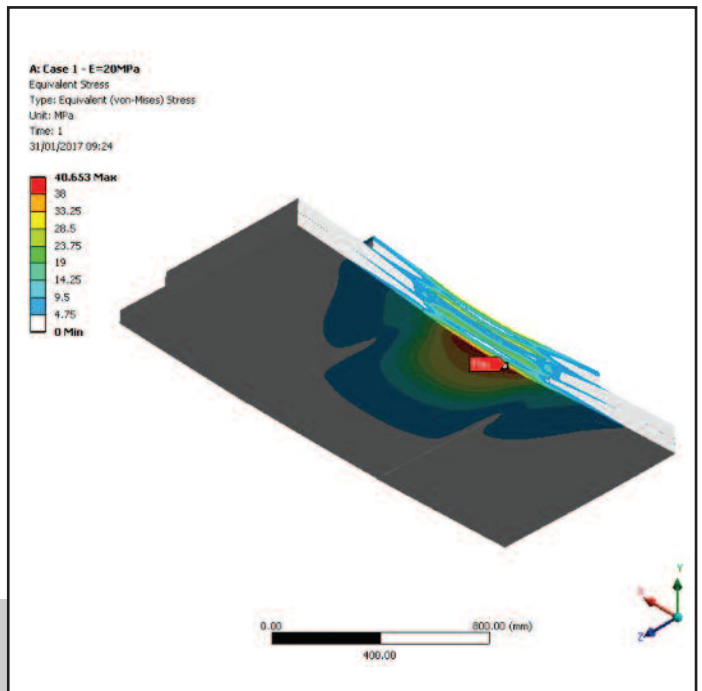
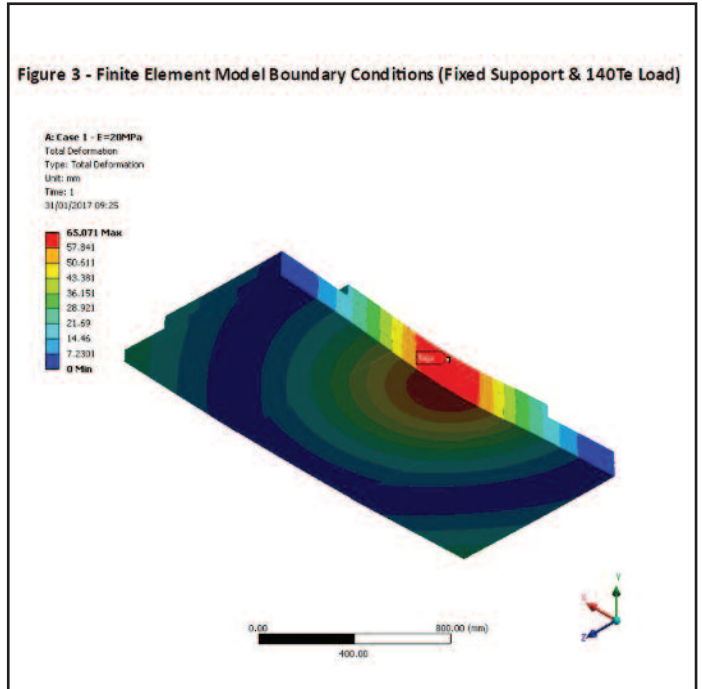
To demonstrate the strength and load spreading characteristics of the conventional 6-piece mat system.

Test Data

A 3D CAD model of the pads was generated using Solidworks 2016 SP4.0 and imported into ANSYS V16.2 for finite element analysis.

Results

The analysis carried out in this project demonstrates that the multi-mat system is an effective load spreading device for all but the softest ground conditions. However even in these extreme conditions the load has been demonstrated to still be effectively distributed by the product.



Click **HERE** to download the full test



TOUGH & DURABLE



EASY TO HANDLE



RELIABLE & SAFE



STABLE SUPPORT